

Polar Genetics Group

We offer large numbers of high quality performance tested and genetically evaluated Canadian swine genetics from a select number of Canadian breeders.

Reproduction within the Canadian Centre for Swine Improvement Program allow selections of superior boars and gilts for export.

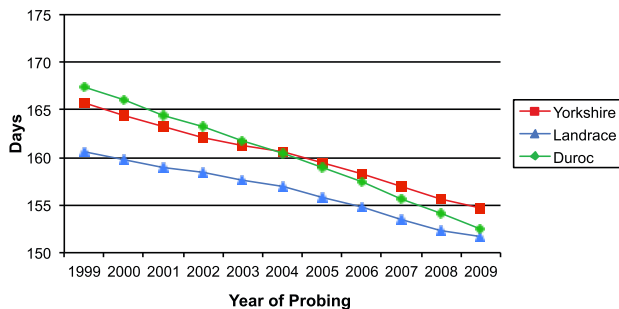


Product Lines

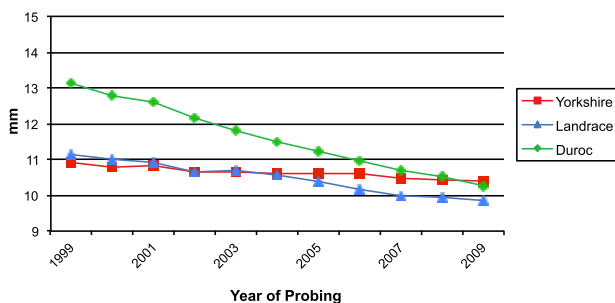
- Purebred pedigreed GGP and GP boars and gilts in the **Yorkshire, Landrace** and **Duroc** breeds.
- F1 Parent Stock as maternal lines bred from **Yorkshire x Landrace** sows.
- F1 Hybrid Boars as terminal sire lines from **Duroc x Lacombe** and **Pietrain x Lacombe** breeds
- Fresh and frozen boar semen

Nucleus Herd Genetic Trends

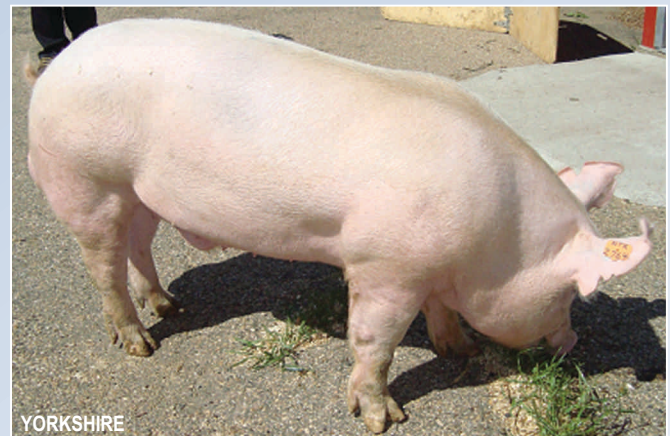
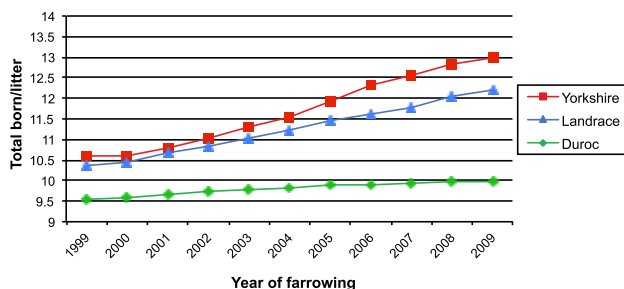
Genetic Trends for Age at 100kg



Genetic Trends for Backfat at 100kg



Genetic Trends for Litter Size



Health Status

Nucleus herds are located in low-density pig regions so that their high health status can be maintained. By following strict biosecurity protocols around entry into these herds, they have been found to be negative for PRRS, Mycoplasma, APP, Swine Influenza, Swine Dysentery, Atrophic Rhinitis, TGE, Respiratory Coronavirus, Tuberculosis and Sarcoptic Mange.

Canada is recognized by the OIE to be free from Foot and Mouth Disease, Classical Swine Fever, African Swine Fever, Aujeszky's Disease, Brucellosis, Teschen Disease, Vesicular Stomatitis, Swine Vesicular Disease and Rinderpest.

All nucleus breeding herds participate in the Canadian Quality Assurance Program (CQA). CQA guarantees that food safety measures are the primary consideration for all pigs offered as breeding pigs and slaughter hogs.

Purebred Nucleus Herd Performance Results

- Average backfat at 100 kg (male, female)
 - Yorkshire 10.3 mm / 10.9 mm
 - Landrace 10.1 mm / 10.2 mm
 - Duroc 10.1 mm / 10.4 mm
- Growth rate to 100 kg (male/female)
 - Yorkshire 148 days / 156 days
 - Landrace 146 days / 153 days
 - Duroc 147 days / 154 days
- Total pigs born/litter (parities 1-7+)
 - Yorkshire 13.0 (13.8 in parity 4)
 - Landrace 12.1 (12.6 in parity 4)
 - Duroc 10.0 (10.8 in parity 4)
- Lean yield % at 100 kg
 - All breeds average 64%, best at 66%
- Loin depth at 100 kg
 - All breeds average 65 mm, best at 70+ mm

Commercial Herd Performance Results

- Many herds produced 25+ pigs weaned/sow/year in 2010
- Piglets born live range between 11 - 13 per litter
- Pigs grow to 115 kg in 155 days
- Carcass backfat thickness at 96 kg ranges between 15-22 mm

Superior Genetics

- Breeding pigs have a high consistency for health status, breeding longevity, physical soundness and local adaptability
- High growth rates, high carcass yields and superior meat quality traits are bred from the terminal sire lines
- Prolific maternal lines wean large litters of heavy piglets, with a low mortality
- High value carcasses ensure premiums are paid at the slaughterhouse
- Boars and gilts are easily adaptable to varying climatic conditions, production systems and pig barn management
- Polar Genetics Group has exported animals successfully to breeders in the United States, China, Chile, Ecuador and Vietnam in recent years. Orders are being readied for Taiwan and Korea.

Contact Information

CANADA
Polar Genetics Inc.
217, 5906 - 50 Street
Leduc, Alberta T9E 0R6 Canada
Tel. +1 780-986-8098
Fax. +1 780-986-4694
E-mail: polar@polargenetics.com



YORKSHIRE



LANDRACE



SUMMIT GILTS®



LANDRACE



Polar Genetics Group Affiliates:
Canadian Centre for Swine Improvement Inc.
Canadian Swine Breeders Association
Canadian Swine Exporters Association

